

Adding CMC ΔE to Color Management Software

TB - 904

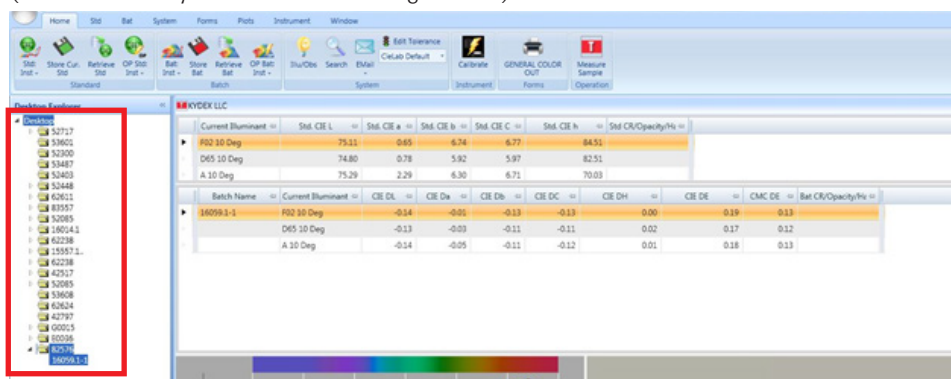
Introduction

Datcolor

This tutorial explains how to add CMC ΔE to the two most commonly used color management software programs Datcolor and IMatch.

STEP 1:

Using Datcolor TOOLS for reading color, right click in the main table where there are color results. (This would be anywhere in the red rectangle below.)



STEP 2:

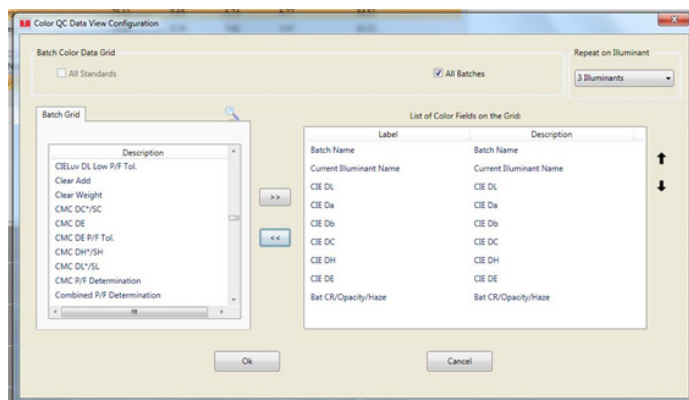
Select the option for grid configuration and the Color QC Data View Configuration Window will open.

STEP 3:

Scroll downward on the Batch Grid window at left and select CMC DE.

STEP 4:

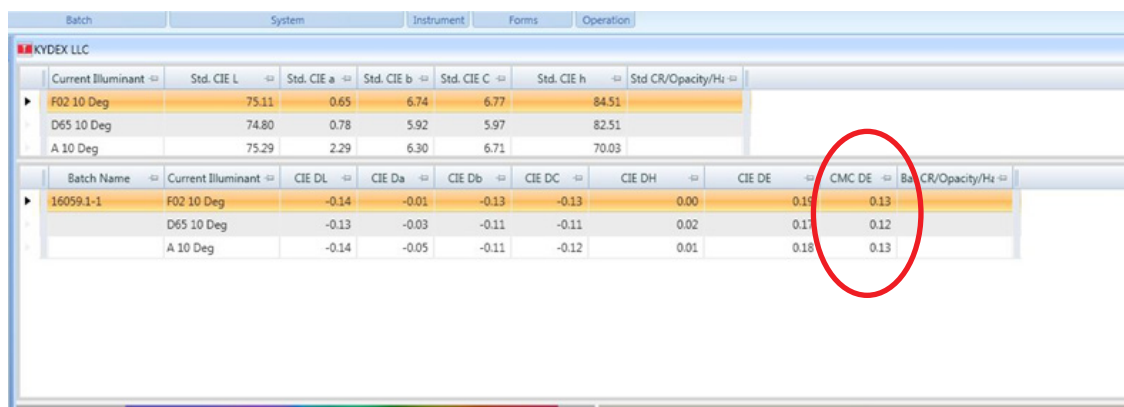
Use the top arrow to move the calculation to the List of Color Fields on the Grid. (Use the black up and down arrows to change the order of the labels.)



STEP 5:

Click OK.

NOTE: The calculation will now display for all color readings.



SEKISUI SPI

ISO 9001:2008 and 14001:2004 Certified

Customer Service

6685 Low St, Bloomsburg, PA 17815 USA

Phone: 800.325.3133, +1.570.389.5810

Outside the US: +1.570.389.5814

Fax: 800.452.0155, +1.570.387.7786

Email: info@sekisui-spi.com

Technical Service

Phone: 800.682.8758

Fax: +1.570.387.8722

Outside the US: +1.570.387.6997

techservice@sekisui-spi.com

sekisui-spi.com

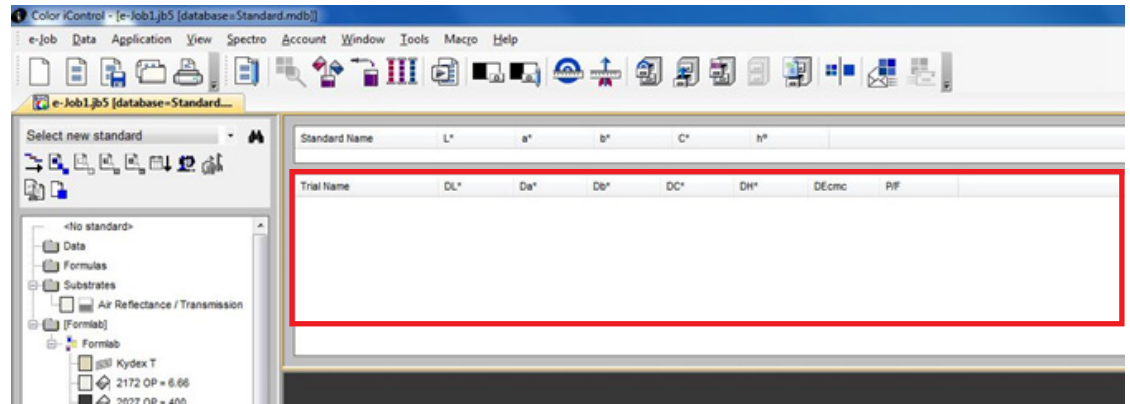
Adding CMC ΔE to Color Management Software

TB - 904

IMatch

STEP 1:

Right click in the main table where there are color results. (This would be anywhere in the red rectangle below.)



STEP 2:

Open the Std-Multi Trial Properties Window.

STEP 3:

Select the Std/Multiple Total Value Setup Tab.

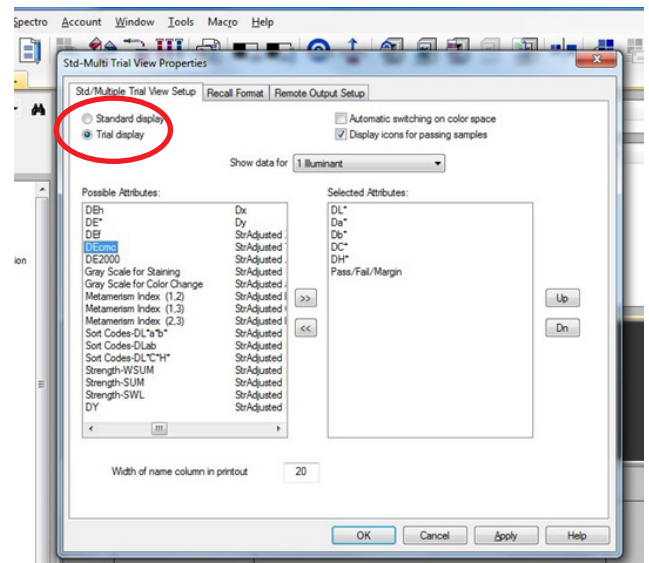
STEP 4:

Select Trial Display.

STEP 5:

In the possible attributes table at left, scroll to find DEcmc and select it.

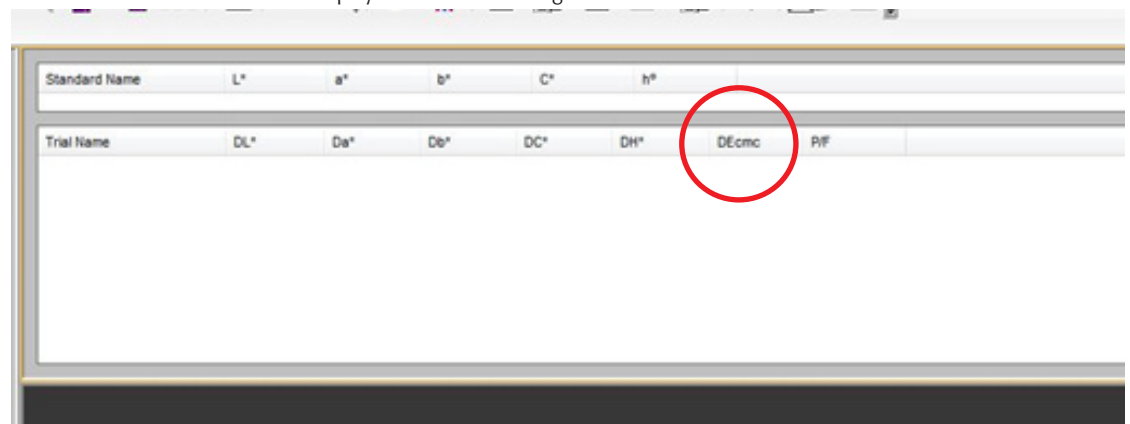
Use the top arrow to move it to the Selected Attributes Window.
(Use the Up and Down buttons to change the order of the Selected Attributes.)



STEP 6:

Click OK.

NOTE: The calculation will now display for all color readings.



SEKISUI SPI

ISO 9001:2008 and 14001:2004 Certified

Customer Service

6685 Low St, Bloomsburg, PA 17815 USA

Phone: 800.325.3133, +1.570.389.5810

Outside the US: +1.570.389.5814

Fax: 800.452.0155, +1.570.387.7786

Email: info@sekisui-spi.com

Technical Service

Phone: 800.682.8758

Fax: +1.570.387.8722

Outside the US: +1.570.387.6997

techservice@sekisui-spi.com

sekisui-spi.com

Adding CMC ΔE to Color Management Software

TB - 904

About IMatch and Datacolor

IMatch and Datacolor TOOLS® are products of X-Rite, Incorporated and Datacolor, respectively. This document is provided by SEKISUI SPI for educational purposes only and SEKISUI SPI does not guarantee accuracy of information. For more information or guidance, please consult customer support at X-Rite or Datacolor.

X-Rite: http://www.xrite.com/top_support.aspx

Datacolor: <http://industrial.datacolor.com/support>

SEKISUI SPI

ISO 9001:2008 and 14001:2004 Certified

Customer Service

6685 Low St, Bloomsburg, PA 17815 USA

Phone: 800.325.3133, +1.570.389.5810

Outside the US: +1.570.389.5814

Fax: 800.452.0155, +1.570.387.7786

Email: info@sekisui-spi.com

Technical Service

Phone: 800.682.8758

Fax: +1.570.387.8722

Outside the US: +1.570.387.6997

techservice@sekisui-spi.com

sekisui-spi.com

Because we cannot anticipate or control the many different conditions under which this information and our products may be used, we do not guarantee the applicability of the accuracy of this information or the suitability of our products in any given situation. Users should conduct their own tests to determine the suitability of each product for their particular purposes. Data in the physical property table represents typical values and are to serve only as a guide for engineering design. Results are obtained from specimens under ideal laboratory conditions. Right to change physical properties as a result of technical progress is reserved. THE PRODUCTS DISCUSSED ARE SOLD WITHOUT WARRANTY OF MERCHANTABILITY OR FITNESS FOR A PARTICULAR USE, EITHER EXPRESSED OR IMPLIED, EXCEPT AS PROVIDED IN OUR STANDARD TERMS AND CONDITIONS OF SALE. Buyer assumes all responsibility for loss or damage arising from the handling and use of our products, whether done in accordance with directions or not. In no event shall the supplier or the manufacturer be liable for incidental or consequential damages. Also, statements concerning the possible use of our products are not intended as recommendations to use our products in the infringement of any patent. Consult local code and regulatory agencies for specific requirements regarding code compliance, transporting, processing, recycling and disposal of our product. Product not intended for use as a heat resistant surface. Texture, product grade and other conditions may cause variations in appearance.

This information supersedes all previously published data.