

## KYDEX® XD MB 3D Laminate

Sheet for flat lamination and membrane pressed applications with antimicrobial protection

### INTRODUCTION

KYDEX® XD MB is a thermoplastic 3D laminate giving designers the ability to incorporate compound corners, logos, and wire management holes while eliminating unsightly seams and the need for edgebanding typically associated with HPL/TFM surfaces. Its integral colour and superior impact resistance minimizes costly maintenance associated with other laminates. Antimicrobial protection is built-in to continuously fight the growth of microbes.

### GENERAL INFORMATION

Extreme durability (XD), superior impact, membrane pressable thermoplastic 3D laminate with integral color in 0.76mm-1.02mm (0.030"-0.040") thickness. While providing good definition it surpasses vinyl overlays, high pressure laminates and melamine in resistance to surface and edge impact.

### SUGGESTED APPLICATIONS

- Store Fixtures
- Checkout Counters
- Exhibits and Displays
- Moldings
- Transaction Surfaces
- Workstations
- Logo and Trademark Panels
- Kiosks
- Cabinetry
- Door and Drawer Fascias
- Pedestals and Stands
- Gondolas
- Tabletops
- Flat Laminated Panels

### ENVIRONMENTAL & SAFETY CONSIDERATIONS

SEKISUI KYDEX, LLC is committed to ensuring that its products can be manufactured, transported, stored, used, disposed and recycled with an appropriate regard for safety, health and environmental protection. We support the safe handling of our products. Please contact our Technical Service department at 800.682.8758 for resources or visit our website: <http://www.kydex.com>. For Material Safety Data Sheets, please call 800.325.3133.

### FEATURES

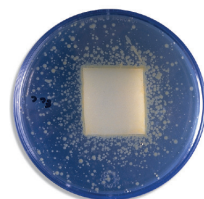
- Tough and extremely durable
- Resistant to cracking and chipping
- Solid, integral colour
- 4,000+ custom colours
- Resistant to a wide range of chemicals
- Abrasion resistant
- Antimicrobial technology inhibits the growth of bacteria that can cause stains, odors and product deterioration.
- Antimicrobial technology is built-in to the sheet so it won't wash or wear away and lasts for the lifetime of the product/sheet.
- Antimicrobial technology keeps the surface cleaner between cleanings.
- Fire retardant
- Very low moisture absorption
- Membrane pressable
- Flexibility allows small radius bends



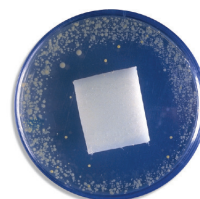
**Customer Collaboration**  
 6685 Low St, Bloomsburg, PA 17815 USA  
 Phone: 800.325.3133, +1.570.389.5810  
 Email: [info@kydex.com](mailto:info@kydex.com)

**appLab™**  
 Phone: 800.682.8758  
 Email: [applab@kydex.com](mailto:applab@kydex.com)

[kydex.com](http://kydex.com)



*Without antimicrobial protection*



*With antimicrobial protection*

*This information is based upon standard laboratory tests and is provided for comparative purposes to substantiate antimicrobial activity for non-public health applications. Antimicrobial protection inhibits the growth of microorganisms that can cause stains, odors and product degradation.*

## KYDEX® XD MB 3D Laminate

Sheet for flat lamination and membrane pressed applications with antimicrobial protection

PROPERTY	TEST METHOD	TYPICAL VALUE <sup>1</sup>	
<b>PHYSICAL</b>			
Specific Gravity	ASTM D792	1.35	
Rockwell Hardness, R-scale	ASTM D785	94	
<b>MECHANICAL</b>			
Tensile Strength	ASTM D638	42 MPa	6,100 psi
Tensile Modulus	ASTM D638	2,416 MPa	351,000 psi
Elongation	ASTM D638	126%	
Flexural Strength	ASTM D790	66 MPa	9,600 psi
Flexural Modulus	ASTM D790	2,480 MPa	360,000 psi
Izod Impact, notched	ASTM D256	801 J/m	15 ft-lb <sub>f</sub> /in
Abrasion Resistance <sup>2</sup>	ASTM D1044	0.0095	
Ball Impact Resistance <sup>3</sup>	NEMA LD3 - 2005	>3,000	
Dart Impact Resistance <sup>3</sup>	NEMA LD3 - 2005	>1,000	
Cleanability	NEMA LD3 - 2005	16	
<b>THERMAL</b>			
Heat Deflection Temperature (HDT) @ 264 psi (1.8 MPa) annealed	ASTM D648	75.6°C	168°F
<b>FLAMMABILITY</b>			
Steiner Tunnel Flame Spread/Smoke Development	ASTM E84	Class 1/A	
Fire classification of Construction Products and Building Elements	EN 13501-1	Class B, s2, d0 (0.76mm) Class C, s2, d0 (1.02mm)	
<sup>1</sup> Values based upon 3.18mm (0.125") sheet unless otherwise specified. <sup>2</sup> Type CS10F wheel, 500gm load, weight loss (gms) per 1000 cycles. <sup>3</sup> Values based upon 1.02mm (0.040") sheet. Not intended for specification purposes.			



**Customer Collaboration**  
 6685 Low St, Bloomsburg, PA 17815 USA  
 Phone: 800.325.3133, +1.570.389.5810  
 Email: info@kydex.com

**appLab™**  
 Phone: 800.682.8758  
 Email: applab@kydex.com

kydex.com

Because we cannot anticipate or control the many different conditions under which this information and our products may be used, we do not guarantee the applicability of the accuracy of this information or the suitability of our products in any given situation. Users should conduct their own tests to determine the suitability of each product for their particular purposes. Data in the physical property table represents typical values and are to serve only as a guide for engineering design. Results are obtained from specimens under ideal laboratory conditions. Right to change physical properties as a result of technical progress is reserved. The products discussed are sold without warranty of merchantability or fitness for a particular use, either expressed or implied, except as provided in our standard terms and conditions of sale. Buyer assumes all responsibility for loss or damage arising from the handling and use of our products, whether done in accordance with directions or not. In no event shall the supplier or the manufacturer be liable for incidental or consequential damages. Also, statements concerning the possible use of our products are not intended as recommendations to use our products in the infringement of any patent. Consult local code and regulatory agencies for specific requirements regarding code compliance, transporting, processing, recycling and disposal of our product. Product not intended for use as a heat resistant surface. Texture, product grade and other conditions may cause variations in appearance.